

Benefits

GPS NavStar is a feature rich and advanced vehicle navigation system. Using advanced GPS technology, this system will not only tell you where you are real time but also guide you to destinations with detailed street map view and voiced turn-by-turn directions.

GPS NavStar is a powerful productivity tool. You can plan the optimal route to your customers or business partners conveniently. This will save you a lot of time and enhance your business power.

GPS NavStar is user friendly. The software interfaces are self-explanatory and the hardware is just plug in and play. Anyone with the basic knowledge of computers can operate the system at ease.

Mobile GPS Online

38 Constable Street
Nepean, Ontario, Canada
K2J 3E5
Tel: (613) 823-0926
sales@mobilegpsonline.com

Hardware

GPS NavStar eases your following concerns:

- How to find the shortest or quickest route to a customer easily
- How to optimize the route with multiple destinations
- How to know next turn point while travelling
- How to reroute if I get lost or off track
- How to find addresses, hotels, bank ATMs, parks, museums, restaurants, gas stations etc. when travelling to strange cities
- How to track where I have been
- How to estimate the travel time and cost precisely

With GPS NavStar, you can:

- do fast door-to-door routing easily
- create a route from address book conveniently
- optimize your route with multiple destinations
- select the shortest or quickest route, or change the route to your preference
- get address-to-address and turn-by-turn driving directions anywhere in the USA, Canada or Europe
- get voice and visual alerts to each turn point
- reroute by pressing only one shortcut key if off track
- find addresses, hotels, bank ATMs, parks, museums, restaurants, gas stations etc. across the USA, Canada or Europe
- estimate travel time and cost accurately
- record and replay your route

Features

GPS NavStar needs:

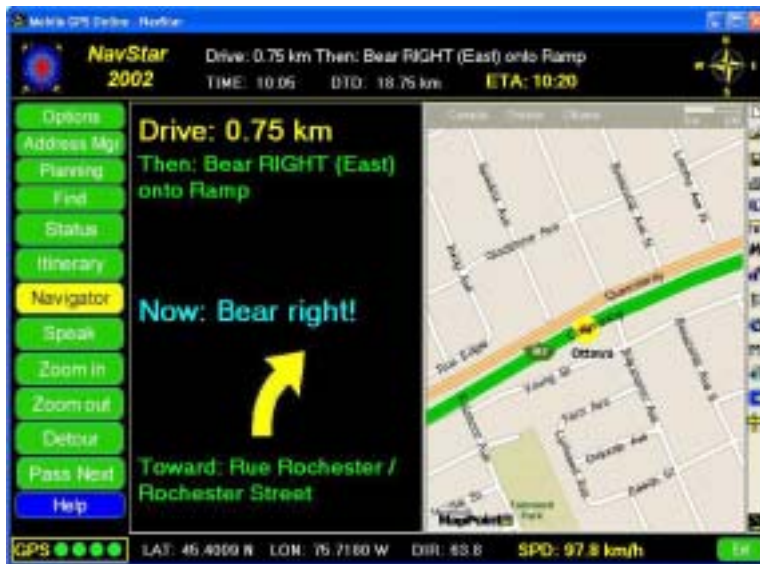
- a laptop PC
- an GPS receiver that supports NMEA 0183 standard V. 2.0 or later



System Requirements

GPS NavStar is designed for

- Microsoft Windows 98/Me/2000/XP
- 233 MHz processor or better
- 4x CD-Rom drive or better
- 128 MB RAM or better
- Microsoft Mappoint 2002 (North America or European Edition)
- About 1.0 GB hard disk space for a full installation including Mappoint
- 25 MB hard disk space for an installation of GPS NavStar only



User Friendly Interface

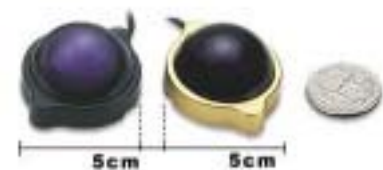
GPS NavStar is user friendly with

- handy functional menu bar
- spacious map area
- comprehensive tool bar
- easy access to options by shortcut keys while driving
- address manager for your management of business contacts and routing
- complete and detailed online help

Accurate Navigation

GPS NavStar will:

- update your current position on map every second
- tell you the accurate driving distance to next turn point and driving guidance real time
- update your trip status of the distance to destination (DTD) and the estimated time of arrival (ETA) automatically
- pass next stop and / or reroute by pressing only one shortcut key
- speak out all driving guidances and one shortcut key for repeating
- zoom in and out for best map view



**RoyalTek Sapphire
GPS Mouse RGM 2000**



**Rayming TripNav TN200
USB GPS Receiver**