

Protrak Ranger



The Ultimate
Covert
Tracking
System!



- Miniature Cellular GPS
- Internal Antennas
- 120 Day Battery Life
- Black Magnetic Covert Version (above)
- Grey Bolt-in Fleet Version (left)

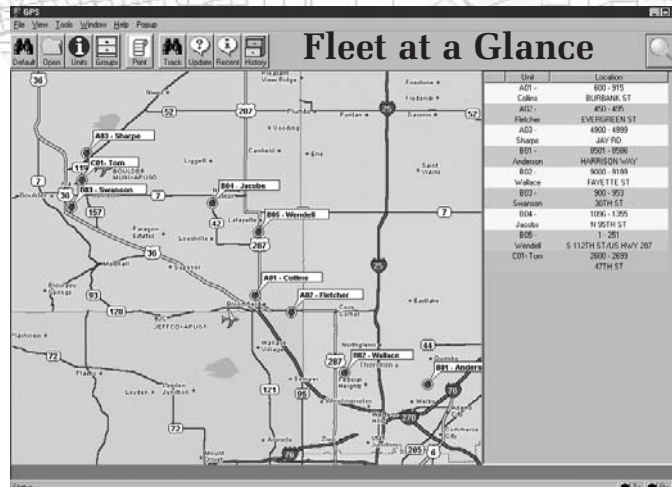
Miniature real-time tracking!

The **Protrak Ranger** is a miniature self-contained GPS tracking system that operates up to 120 days on internal AA batteries. The **Protrak Ranger** is easy to deploy since there are no external cables or antennas to attach and the water-resistant case gives you the flexibility to place the unit inside or outside the vehicle.

The Ranger uses reliable High Speed "GPRS" Cellular for two-way communication, data verification and memory downloads to the server. With a 2000 position internal memory, the Ranger will store GPS data when cellular coverage is interrupted and automatically update the server (download history) when coverage resumes. This assures that you get all the travel information from the vehicle.

Unlike other Internet based systems, we provide a powerful software package with the latest "GDT" maps to run on your laptop or PC. This gives you faster access to your units, allows you to look at your entire fleet at one time, and generate reports and routes at will. Every time you launch the software it connects to our server and retrieves any new data automatically so you can go on about your business.

Efficient dispatch is easy with "Fleet at a Glance" technology. Locations and addresses are displayed on a map and automatically updated by the software.



GPS Specifications:

16 Channel GPS
256 Correlators
-139 dBm Sensitivity
Hot Start 9 Seconds
Warm Start 37 Seconds
Cold Start 52 Seconds
Internal Antenna

Case & Size:

5.1" x 3.1" x 1.47"
Water-resistant Case
NEMA Outdoor Polycarbonate

Weight:

8.1 oz w/o batteries or magnet

Electrical Specifications:

6 AA alkaline batteries or 6-40 VDC
(Rechargeable internal power available)
Up to 120 days on battery based on 10 reports a day.

GSM Specifications:

850/1900 Class 10 or
900/1800 Europe
Transmits GPRS High Speed Packet Data.
2-Way Communication

Data Logging:

2000 position on-board memory
records when cellular service is poor.

Data Transmission Intervals:

Timed: 1 to 24 Hours
Motion Activated: 2 or 5 minutes+
Hourly reports during stops

Inputs/Outputs:

1 Input - 1 Output