

www.mobilegpsonline.com

WebGPSTrack User Manual



- 1 - Contents of the box
- 2 - Sign up for service
- 3 - Hardware setup
- 4 - Viewing data
- 5 - Downloading data
- 6 - Street addresses
- 7 - Using Google Earth
- 8 - Park & Panic
- 9 - Troubleshooting

1

Contents of the box

WorldTracker SMS Unit

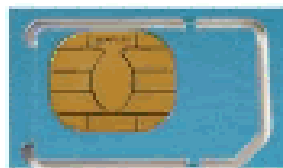
Standard 12V
Wall Charger



Vehicle Cigarette
Lighter Adapter



Cellular SIM Card (optional)



Backup Battery



ALSO INCLUDED:
Suction Mount, Velcro Mount

2

Sign up for service

1. Go to www.mobilegpsonline.com/pro_webtrack.php. Click on the Buy Now button and follow the instructions on the website.
2. Click on the web link [Subscribe to WebGPSTrack System Now](#) to open your sign up page.

Please pay the one time activation fee and sign up for monthly service. The activation of your tracker will not be completed until these payments are received.

There are several options for SMS service. Please visit our website for current pricing and promotions. If you wish to use your own cellular service, you will be responsible for any charges billed to you from your provider.

3. Follow the instructions on the website and provide the required information. It is important that the name associated with the PayPal account **and** credit card match.

The tracker will be activated within 1 business day after providing your information. We will notify you by email upon completion of the activation process. This e-mail will contain a link to your personal tracking website. Please bookmark this URL for quick and easy access in the future.

3

Hardware Setup

1: Eject the SIM card tray.



2: Place the SIM in the tray.



3: Insert the tray with the SIM as shown.



4: Plug tracker into wall using 12V charger



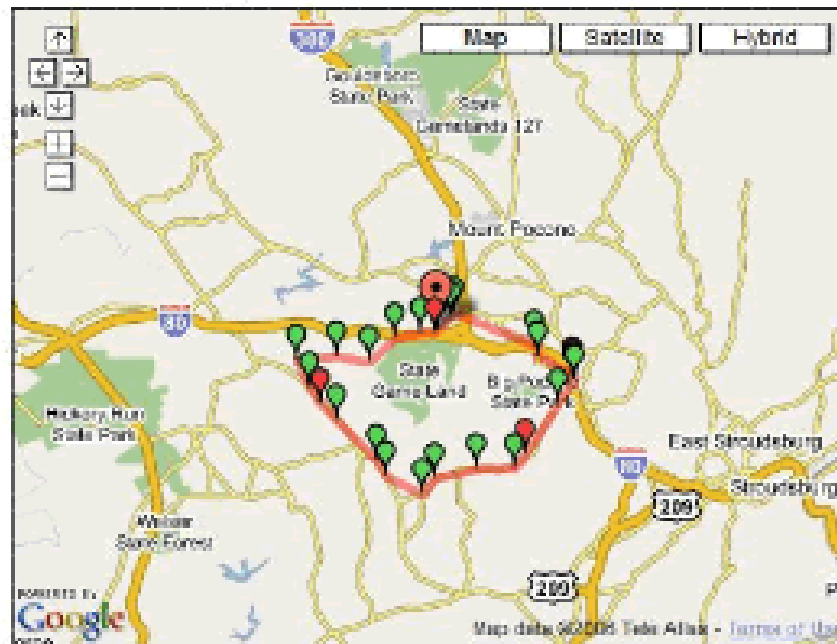
5: Turn the unit on and position it face up near a window. Please ensure that the power flow is not interrupted and do not use any type of battery power. Make sure the unit is on until you receive activation confirmation via e-mail. This may take up to 24 hours.

4

Viewing Data

Viewing Data:

To view dates, times and speed of a record, click on a specific balloon. Green balloons mean that the vehicle is moving and red balloons mean that the vehicle has stopped.



2	May 2005						2
Sun	Mon	Tue	Wed	Thu	Fri	Sat	
30	1	2	3	4	5	6	
7	8	9	10	11	12	13	
14	15	16	17	18	19	20	
21	22	23	24	25	26	27	
28	29	30	31	1	2	3	
4	5	6	7	8	9	10	

Use the calendar to view historical data of the movements your target has made. Blue dates have data, white dates do not. To change the month click the arrows on the top left and right.

5

Downloading Data

Downloading Data:

TrackingTheWorld.com automatically saves all location information sent by the tracker to our server for several months. Select the date you wish to download using the calendar. Click "Download .csv data."

The left side shows the calendar from the current day and the right side shows the calendar from 2 days before.

FOUND USER:	
Last Report:	41 secs
Altitude:	10
Speed:	1
Course:	271
<input checked="" type="checkbox"/> Refresh:	<input type="text" value="121"/>
Latitude:	
Longitude:	
Download .csv data	

FOUND USER:	
Last Report:	41 secs
Altitude:	10
Speed:	1
Course:	271
<input checked="" type="checkbox"/> Refresh:	<input type="text" value="121"/>
Latitude:	
Longitude:	
Download .csv data	

It is not possible to download data for the current day.

May 2009						
Sun	Mon	Tue	Wed	Thu	Fri	Sat
30	1	2	3	4	5	6
7	8	9	10	11	12	13
14	15	16	17	18	19	20
21	22	23	24	25	26	27
28	29	30	31	1	2	3
4	5	6	7	8	9	10

May 2009						
Sun	Mon	Tue	Wed	Thu	Fri	Sat
30	1	2	3	4	5	6
7	8	9	10	11	12	13
14	15	16	17	18	19	20
21	22	23	24	25	26	27
28	29	30	31	1	2	3
4	5	6	7	8	9	10

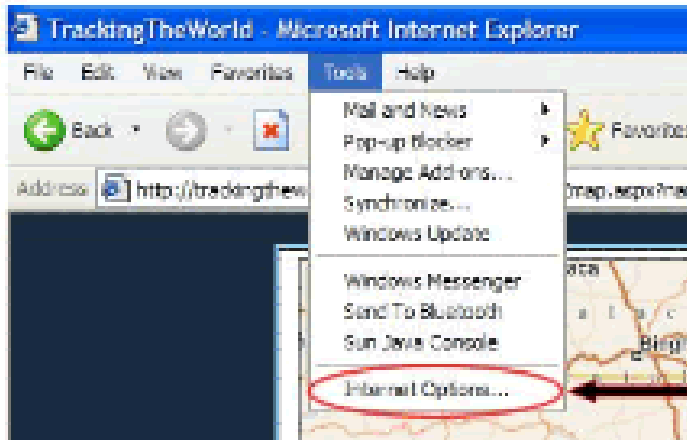
Dates which have saved tracking data will appear in blue and the current day will be displayed in yellow.

6

Street Addresses

Street Addresses:

To obtain a street address for a specific location, change the map type to Virtual Earth. The map type options are located below the calendar.



In order for the data to be visible, please change your Internet Explorer browser security settings.

1: Select the "Tools" drop down menu, and click on "Internet Options..."



2: Select the "Security" tab.

3: Select Custom Level.



4: Make sure that the "Access data sources across domains" option is enabled.

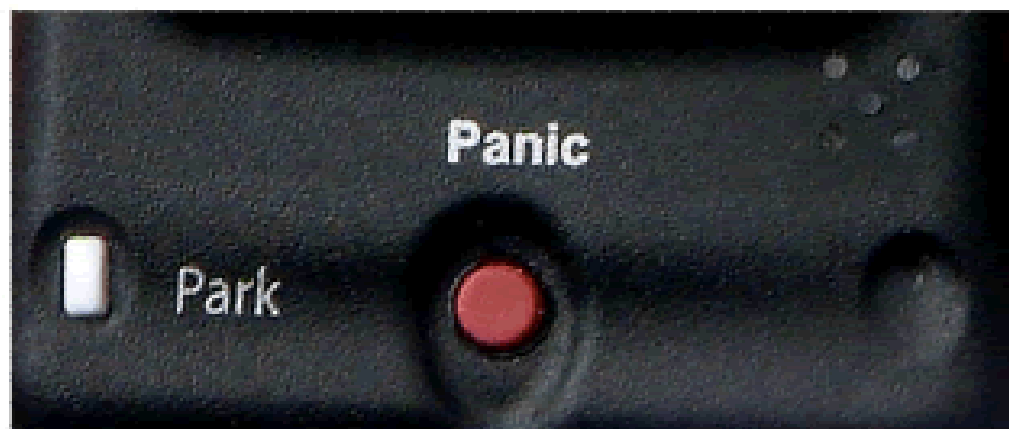


8

Panic & Park

Panic Button:

When pushed and held down for 2 seconds, the panic button will cause the unit to send 20 location reports, 2 minutes apart. These location points will display on your map page with an SOS alert message. The tracker can be programmed to send the alert messages to a cell phone if you prefer.



Park Button:

Pressing the Park button will set a 100 meter geo-fence around the trackers current position (programmable to up to 1000 meters). If the tracker moves outside this area, 20 location reports, sent every 2 minutes, will be displayed on your map page. The alerts can be sent to a cell phone if you prefer.

To receive alerts on your cell phone, please call 650-242-8704

Troubleshooting

"My tracker has stopped sending data."

Call your tracker from an unblocked cellular phone. Hang up and wait. You will receive an SMS text message shortly. If you do not receive the message, retrieve your unit and replace or recharge the batteries. Try turning the unit off and plugging it into the 12-volt power adapter. Then turn it back on. Once the red LED begins to blink slower, try calling it again. If you still do not receive a text message, the unit will need to be reprogrammed. Please contact our support department for assistance.

"The blue "FIX LED" does not illuminate."

The unit should get a GPS location fix within a few minutes. If you do not receive a fix, take the unit outside and wait for a few minutes while the unit has a clear view of the sky.

"My tracking page displays yesterday's data."

Data is not updated on the map until new positions are reported. Look at the time of the "last report" on the map. If the time of the last report is before midnight central standard time, the current data is from the day before. Your tracker may have stopped sending data, please retrieve the tracker for testing.

If you continue to have trouble, please call 650-242-8704